

DataTraveler® Locker+ G3 Mac Updater

System Requirements

- Login as a User with Administrator Privileges
- Mac OS X 10.12.x - Mac OS X 10.15.x
- USB 2.0/USB 3.0 (Type A); (Keyboard and Hubs USB ports not recommended)

This updater is only for DTLPG3.

Mac Updater Instructions

ATTENTION: It is recommended to backup the data on the drive before using the updater!

Note: Backup all data stored on the DTLPG3 and close all applications prior to running the updater.

1. Remove all other flash devices (e.g., flash media cards, USB flash drives, etc.).
2. Insert the DTLPG3 and make sure it is recognized by your Operating System.

Caution: Do not remove the drive or interact with any Finder Windows during the updater process.

3. Double-click DTLPG3_Mac_Updater.app to initiate the updater process.
4. Click on **Open*** to continue.

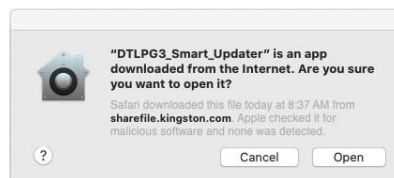


Figure 1: Click-on Open

***Note:** This is based Mac OS default security settings. The dialog box similar to (Figure 1) will be displayed the first time using the updater after downloading it.

5. Accept the License Agreement and click **Next** to continue.
6. The software will attempt to detect the DTLPG3 drive.

Note: If a window is displayed notifying you that DTLPG3 is running, click **Next** to continue.

7. An update warning message will be displayed to backup data before updating. When ready click-on **Update** to start the update.
8. A window should appear notifying you that your drive has been updated successfully. Check **Launch** if you want DTLPG3 to launch automatically and then click **Finish**.
9. Once the updater process is complete, you may begin using the DTLPG3 or disconnect the drive.

If the updater process was unsuccessful, repeat steps 2-8.



FAQs

For a complete list of the latest FAQs, go to the DataTraveler website at www.kingston.com/support/technical/category/usb

Q1). The reset utility fails to recognize the DTLPG3 even though it is inserted into the USB port.

A1). You may be able to resolve by removing other flash devices such as flash cards and/ or flash drives. Once this is done, exit the updater and launch it again.

***If updater still fails to recognize DTLPG3 contact Kingston's Tech Support.**